

800x1600mm

CREANZA
IMAGINATION IS EVERYTHING

SHINE
COLLECTION



BASK IN THE
LUSTROUS **MAJESTY**

BUILDING A LEGACY OF INNOVATION AND EXCELLENCE

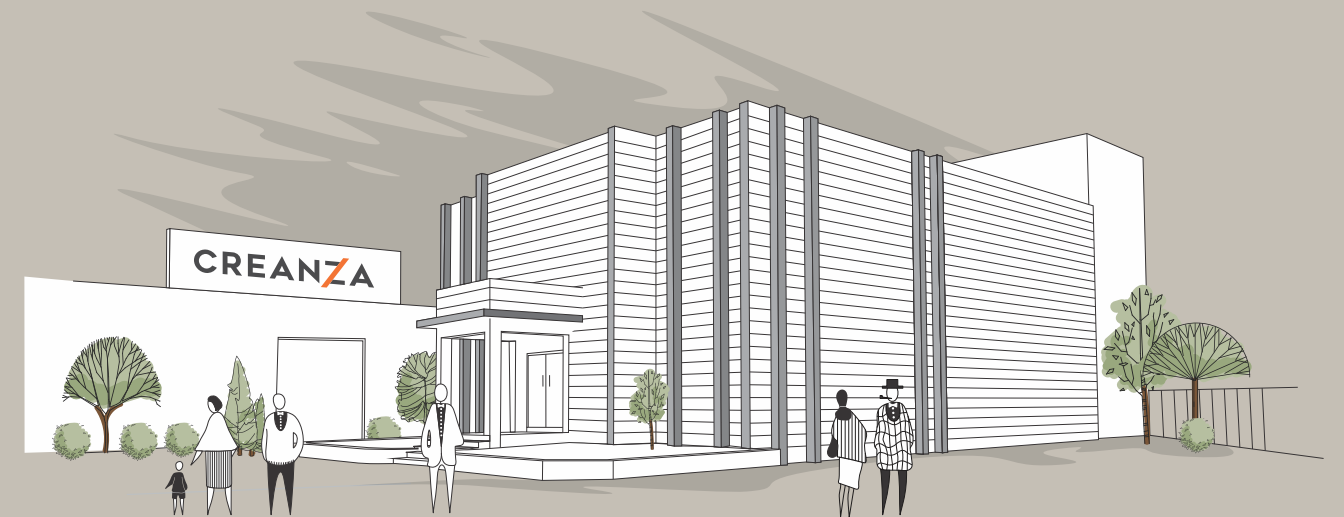
ABOUT US

In an industry where some sellers focus on innovation, the other few choose to concentrate on variety. CREANZA has adopted a holistic strategy of encompassing all the attributes of the product. CREANZA epitomizes consumer-first approach with an enduring combination of innovation, unique variety and quality.

Since its inception in 2011, CREANZA tiles, based at Morbi in Gujarat, is one of the pioneer and dominant manufacturers cum exporters of premium glazed vitrified tiles. CREANZA has state-of-the-art manufacturing facility with latest technology machinery imported from Italy, Spain and China. At CREANZA, we

believe in providing superior quality and services, further strengthening our relationship with consumers.

In tandem with an increasing demand of vitrified tiles, we have an installed capacity of 55,000 sq.m./day of GVT, PGVT, WALL TILES and Double Charge tiles spread across a humongous 65 acres land. We have collaborated with the largest Italian conglomerate, Sacmi for its press technology and installed System digital printing machine, which helps us yield innovative tiles with stunning designs and excellent quality. We constantly emphasize on new product development catering the dynamic and unique taste of our consumers.



20+

Years of experience
in ceramic industry

75+

Export
countries

1000+

Channel Partners
in India

25m

Sq. mtrs.
Production
Capacity Per Year

06

Manufacturing Units
Across Morbi

1000+

Employees

The structure, technology and the entire setup at CREANZA is in sync with the contemporary times. Innovation, progress, commitment and perfection are the four fundamental pillars of the company. Core values of the CREANZA team is a combination of intelligence, skills, knowledge and dedication. The people working at CREANZA love to invent and reinvent while exploring new concepts with the help of our state-of-the-art technology and a positive attitude.

The unmatched technical brilliance of our manufacturing units and genuine efforts of the man power has led us to the path of growth and progress. Marching ahead on the bright path of achievement we are bringing a new thought process for the best results. Ideas for the future!



LET YOUR SPACE ECHO MIRROR-LIKE BRILLIANCE

Surround yourself
with the gleaming
and sparkling beauty

Immerse yourself in luxury with these glossy finish tiles that radiate grandeur and brilliant sheen because of their exquisitely fine craftsmanship. These tiles are available in 800*1600mm size, ensuring seamless installation with a refined look. Each piece of the tile is designed with highly polished glaze, mirroring a radiant finish and reflecting light in a sophisticated manner. These tiles are available in various colors and patterns, allowing you to adorn your space with its luminous finesse. Besides their lustrous appeal, they also offer functional benefits. They are easy to maintain, highly durable, and non-porous, making them a favorable choice for any interior project. Embellish your abode with these sophisticated and opulent tile pieces, which instantly elevate any decor.

FEEL THE TACTILITY OF THESE VIVIDLY COLORED AND TEXTURES ART PIECES

The collection is available in earthy tones with textures replicating nature's flow and essence, offering a rich tactile appeal. These tiles are the epitome of art and functionality, capable of transforming ordinary interiors into extraordinary ones.

The collection caters to diverse styles, textures, and colors, offering a seamless blend of aesthetics and modern richness. These patterns can create statement pieces, delicate carvings, or subtle charm, providing infinite possibilities for decorating any space. The artistic angle of these tiles will create a luxuriously rich look and feel, ensuring depth and luminosity. From sleek wood-like patterns to elegant vein-like textures, the collection ensures an inviting ambience with enhanced durability and ease of maintenance. Add an accent of impact to your modern or classic interiors with tiles that add a touch of finesse to any design project.

TABLE OF CONTENT



REGAL
CALCUTTA WHITE



REGAL
SELVA GOLD



REGAL
BRAZILLIANO BRUNO



REGAL
BRAZILLIANO BRUNO DECOR



REGAL
BRAZILLIANO JADE



REGAL
BRAZILLIANO JADE DECOR



REGAL
SARAN COLIN GREY



REGAL
SARAN COLIN GREY DECOR



REGAL
SARAN COLIN NATURAL



REGAL
SARAN COLIN NATURAL DECOR



REGAL
LUCA DI NERO



REGAL
LUCA DI NERO DECOR



REGAL
LUCA DI AZUL



REGAL
LUCA DI AZUL DECOR



REGAL
GLOW ONYX BLUE



REGAL
GLOW ONYX BLUE DECOR



REGAL
GLOW ONYX GREEN



REGAL
GLOW ONYX GREEN DECOR



REGAL
GLOW ONYX NATURAL



REGAL
GLOW ONYX NATURAL DECOR



REGAL
GLOW ONYX BLACK



REGAL
GLOW ONYX BLACK DECOR



REGAL
HERITAGE WOOD OAK



REGAL
HERITAGE WOOD WALNUT

REGAL CALCUTTA WHITE





REGAL CALCUTTA WHITE
FINISH : SHINEX

SIZE : 800x1600mm | RANDOM : 4



REGAL SELVA GOLD





REGAL SELVA GOLD
FINISH : SHINEX

SIZE :
800x1600mm

RANDOM :
5

Scan Here
For Virtual
360°



REGAL BRAZILLIANO BRUNO & DECOR





REGAL BRAZILLIANO BRUNO DECOR
FINISH : SHINEX PLUS



REGAL BRAZILLIANO BRUNO
FINISH : SHINEX

SIZE :
800x1600mm

RANDOM :
4

Scan Here
For Virtual



REGAL BRAZILLIANO JADE & DECOR





REGAL BRAZILLIANO JADE DECOR
FINISH : SHINEX PLUS



REGAL BRAZILLIANO JADE
FINISH : SHINEX

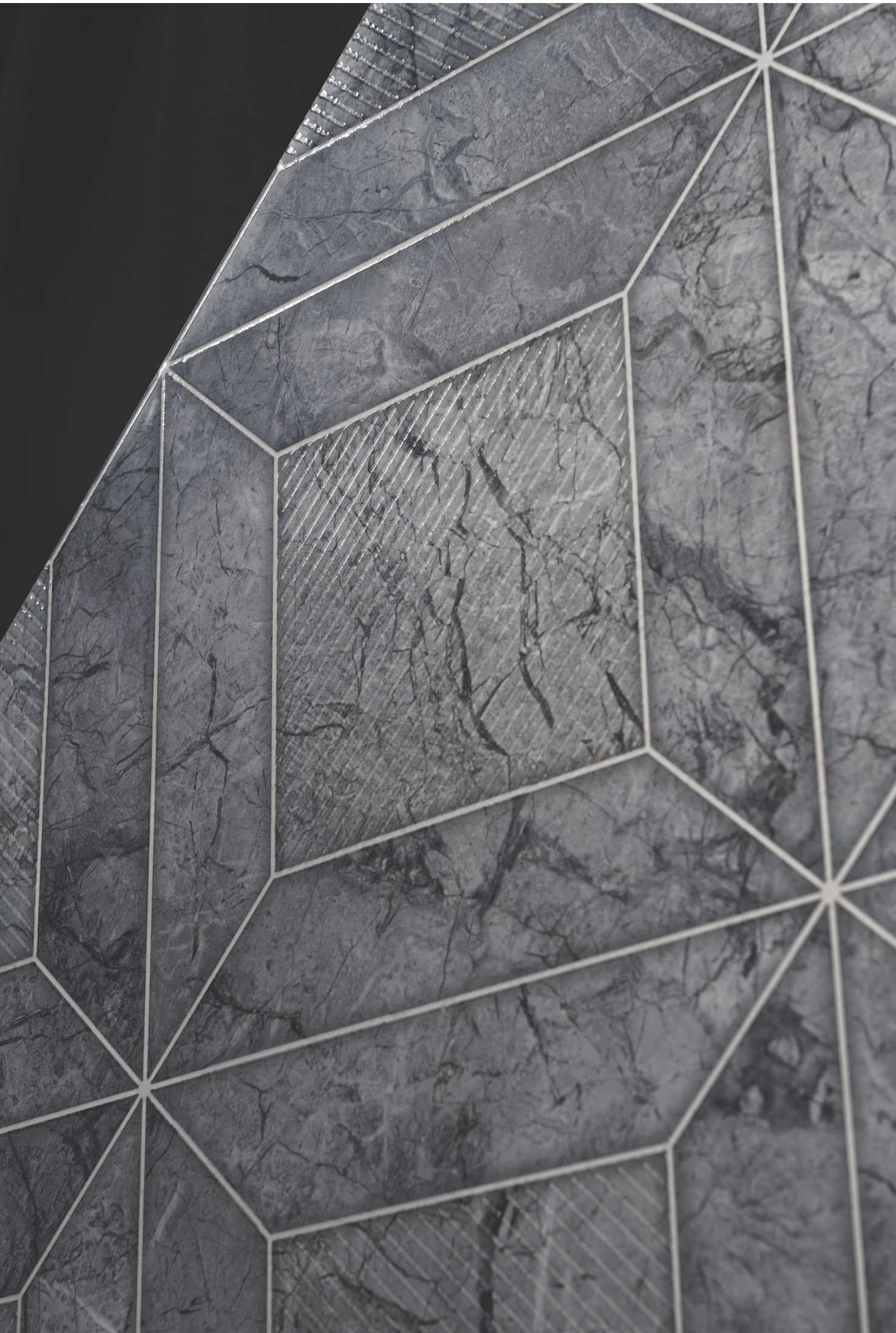
SIZE :
800x1600mm

RANDOM :
4



REGAL SARAN COLIN GREY & DECOR





REGAL SARAN COLIN GREY DECOR
FINISH : SHINEX PLUS



REGAL SARAN COLIN GREY
FINISH : SHINEX

SIZE :
800x1600mm

RANDOM :
3

Scan Here
For Virtual



REGAL SARAN COLIN NATURAL & DECOR





REGAL SARAN COLIN NATURAL DECOR
FINISH : SHINEX PLUS



REGAL SARAN COLIN NATURAL
FINISH : SHINEX

SIZE :
800x1600mm

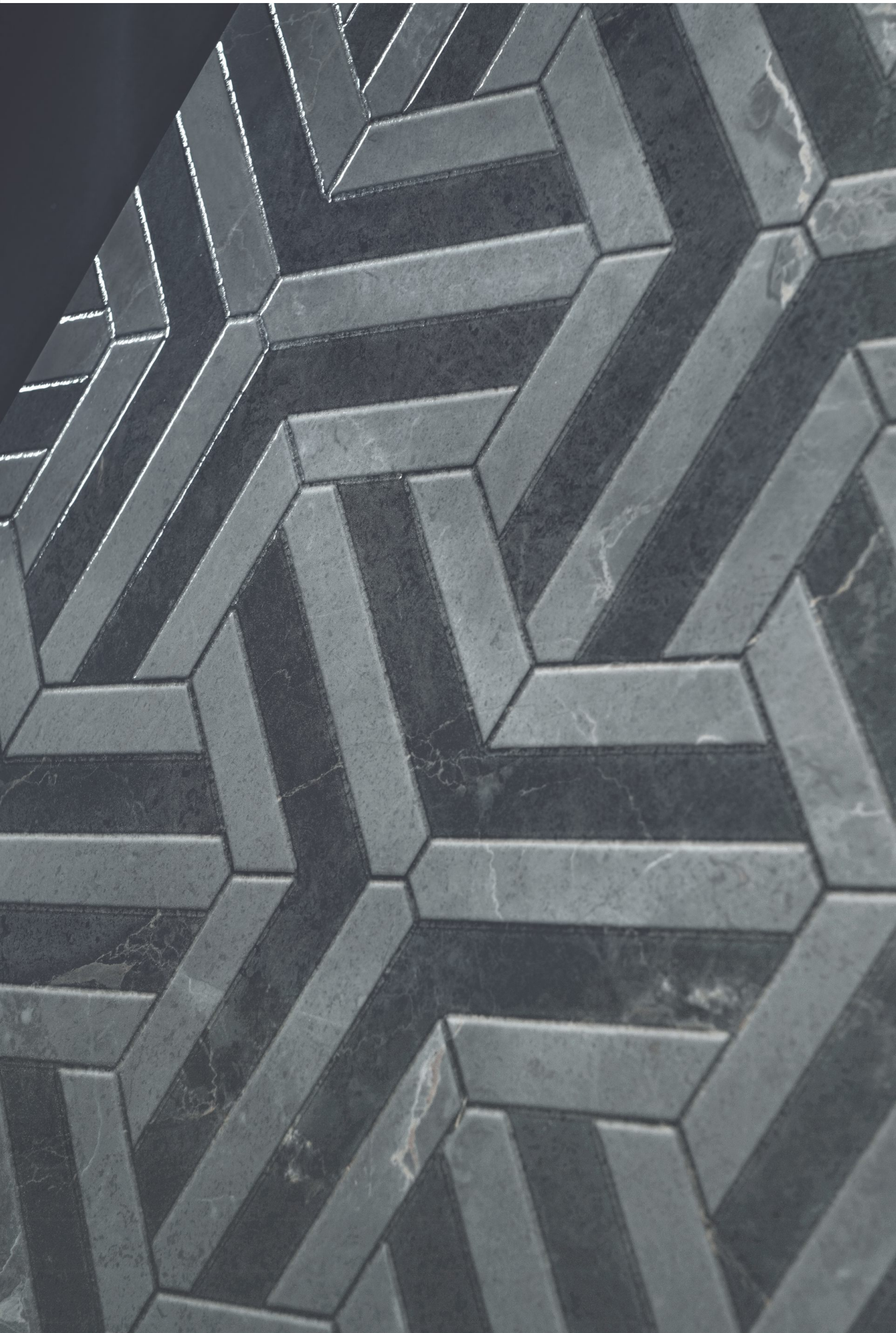
RANDOM :
3

Scan Here
For Virtual



REGAL LUCA DI NERO & DECOR





REGAL LUCA DI NERO DECOR
FINISH : SHINEX PLUS



REGAL LUCA DI NERO
FINISH : SHINEX

SIZE :
800x1600mm

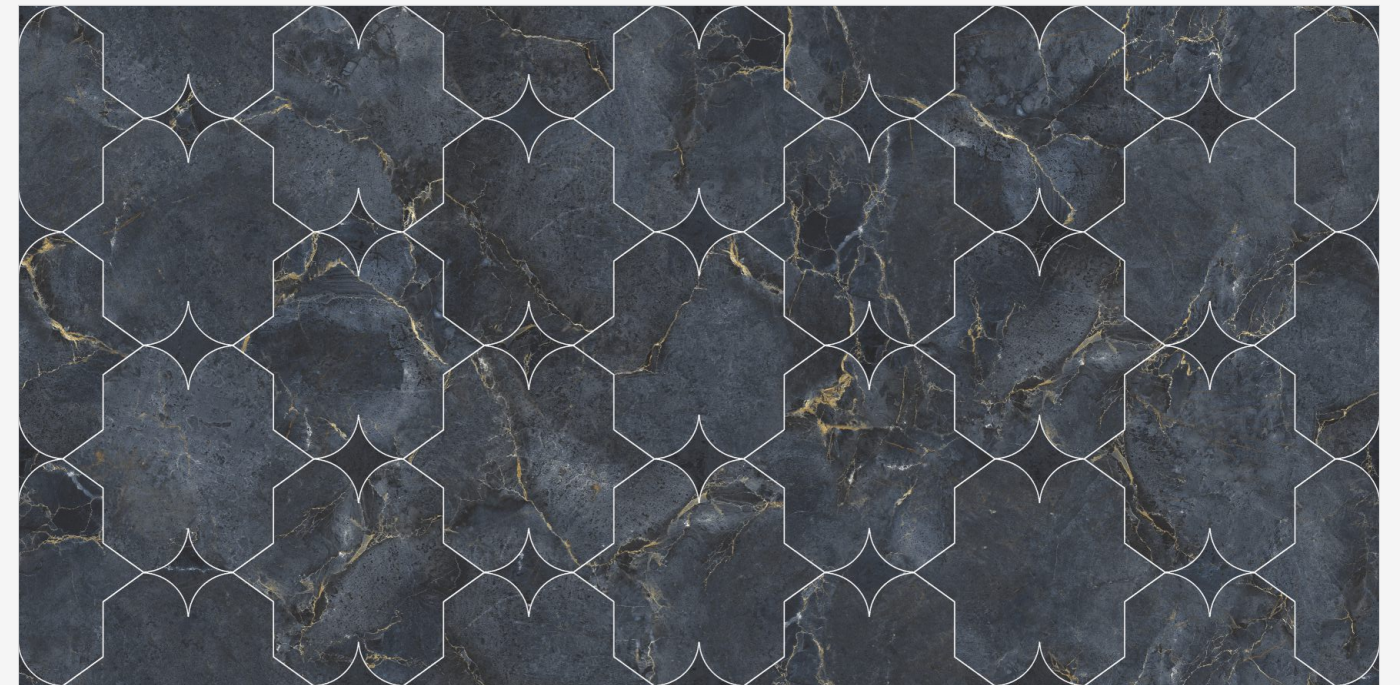
RANDOM :
5

Scan Here
For Virtual



REGAL LUCA DI AZUL & DECOR





REGAL LUCA DI AZUL DECOR
FINISH : SHINEX PLUS



REGAL LUCA DI AZUL
FINISH : SHINEX

SIZE :
800x1600mm

RANDOM :
5

Scan Here
For Virtual

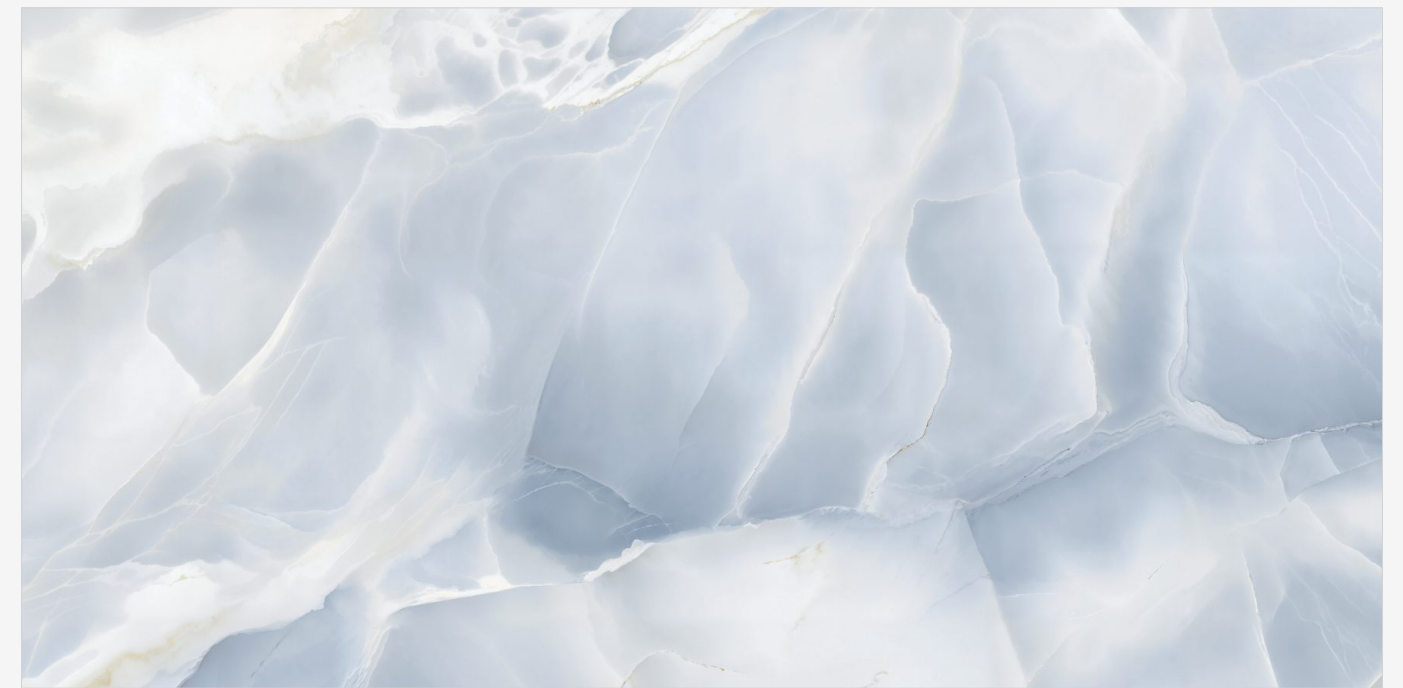


REGAL GLOW ONYX BLUE & DECOR





REGAL GLOW ONYX BLUE DECOR
FINISH : SHINEX PLUS



REGAL GLOW ONYX BLUE
FINISH : SHINEX

SIZE :
800x1600mm

RANDOM :
4

Scan Here
For Virtual



REGAL GLOW ONYX GREEN & DECOR





REGAL GLOW ONYX GREEN DECOR
FINISH : SHINEX PLUS



REGAL GLOW ONYX GREEN
FINISH : SHINEX

SIZE :
800x1600mm

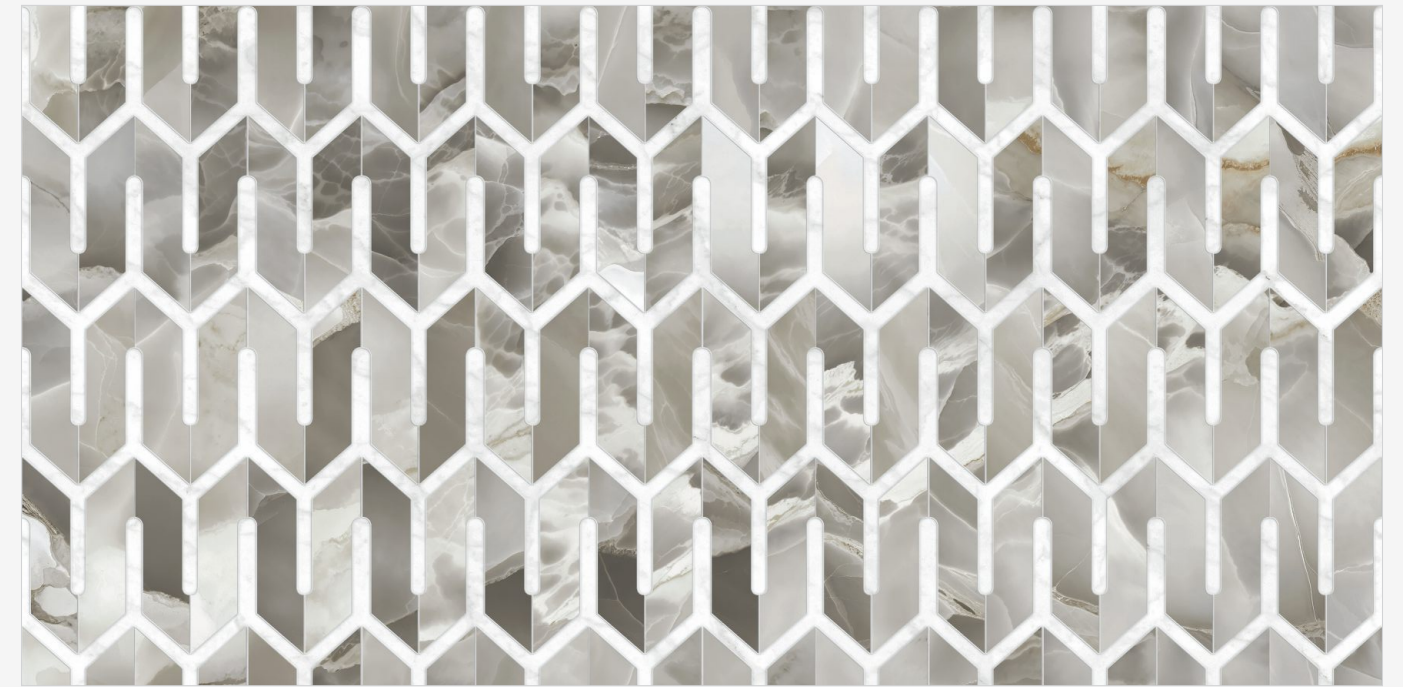
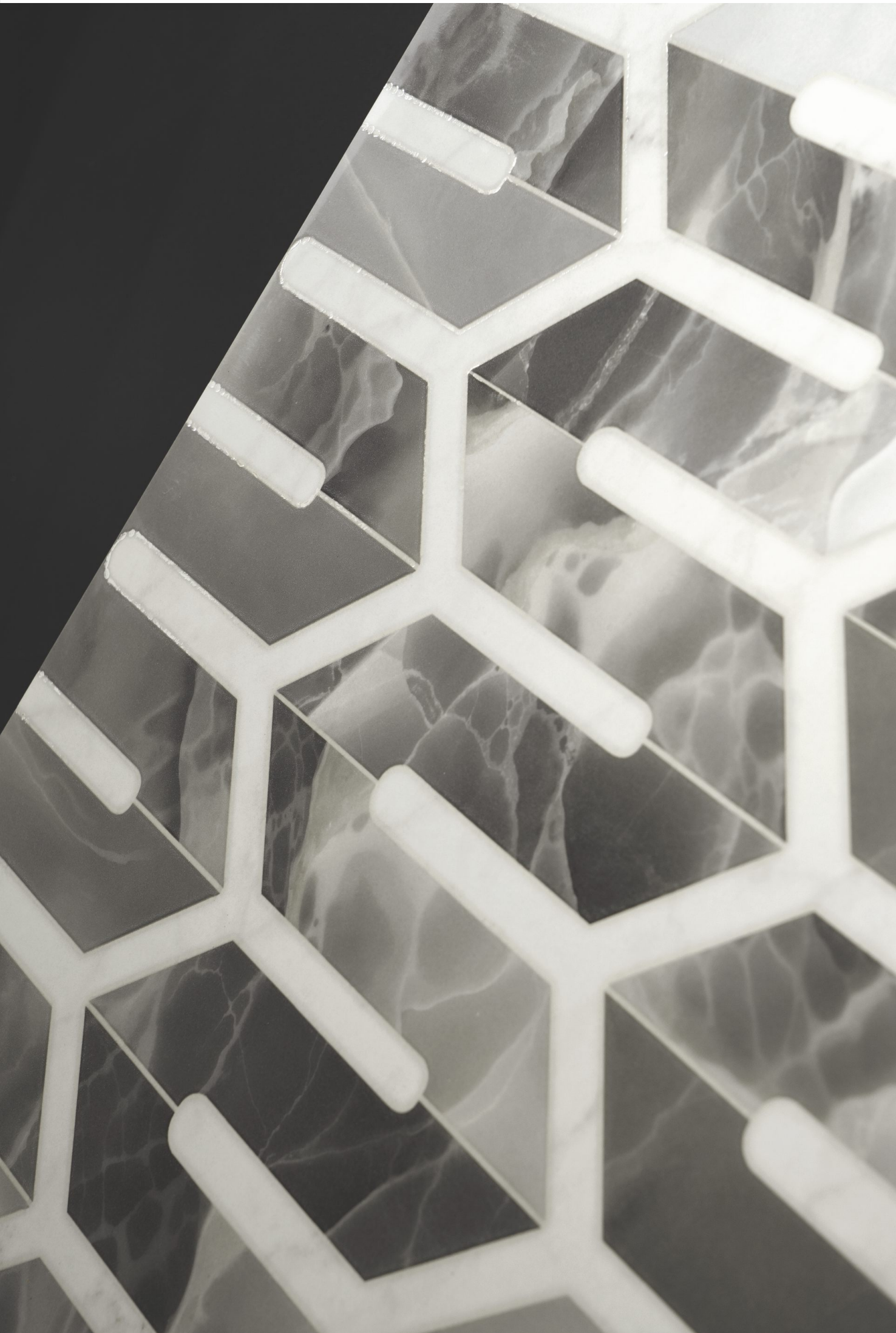
RANDOM :
4

Scan Here
For Virtual



REGAL GLOW ONYX NATURAL & DECOR





REGAL GLOW ONYX NATURAL DECOR
FINISH : SHINEX PLUS



REGAL GLOW ONYX NATURAL
FINISH : SHINEX

SIZE :
800x1600mm

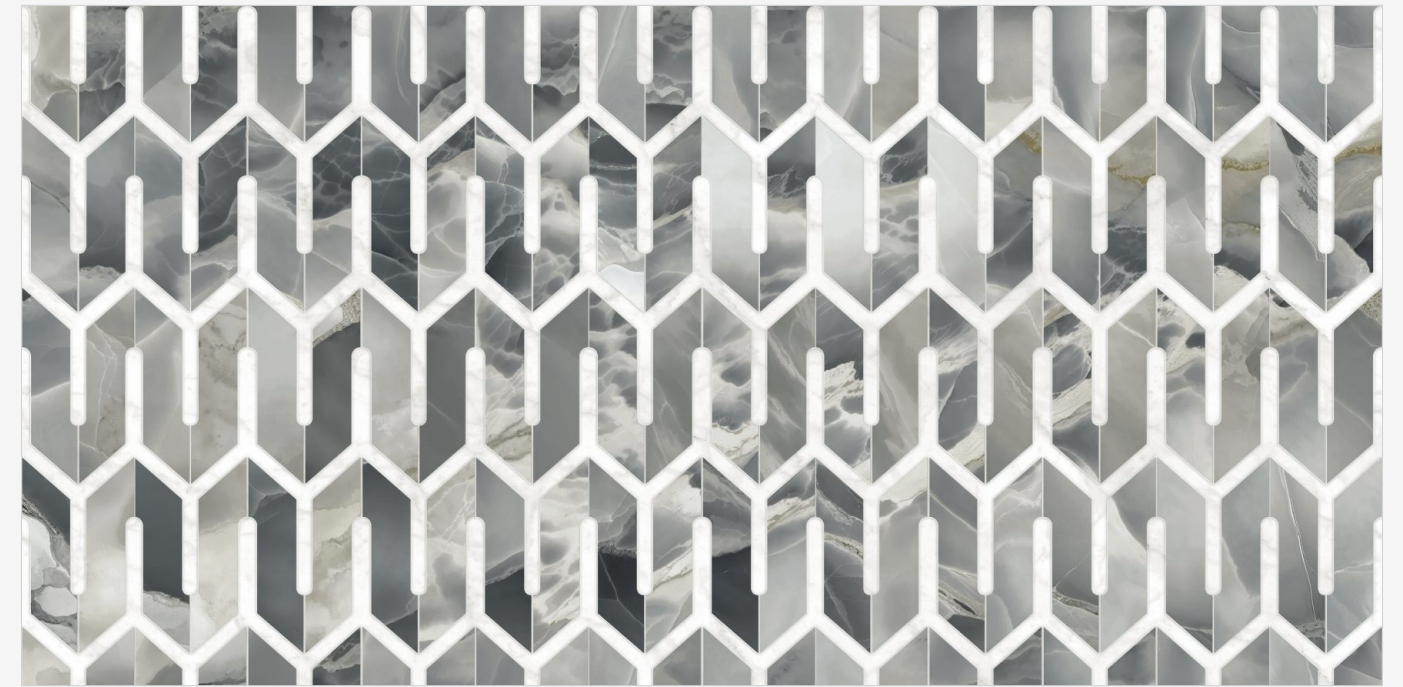
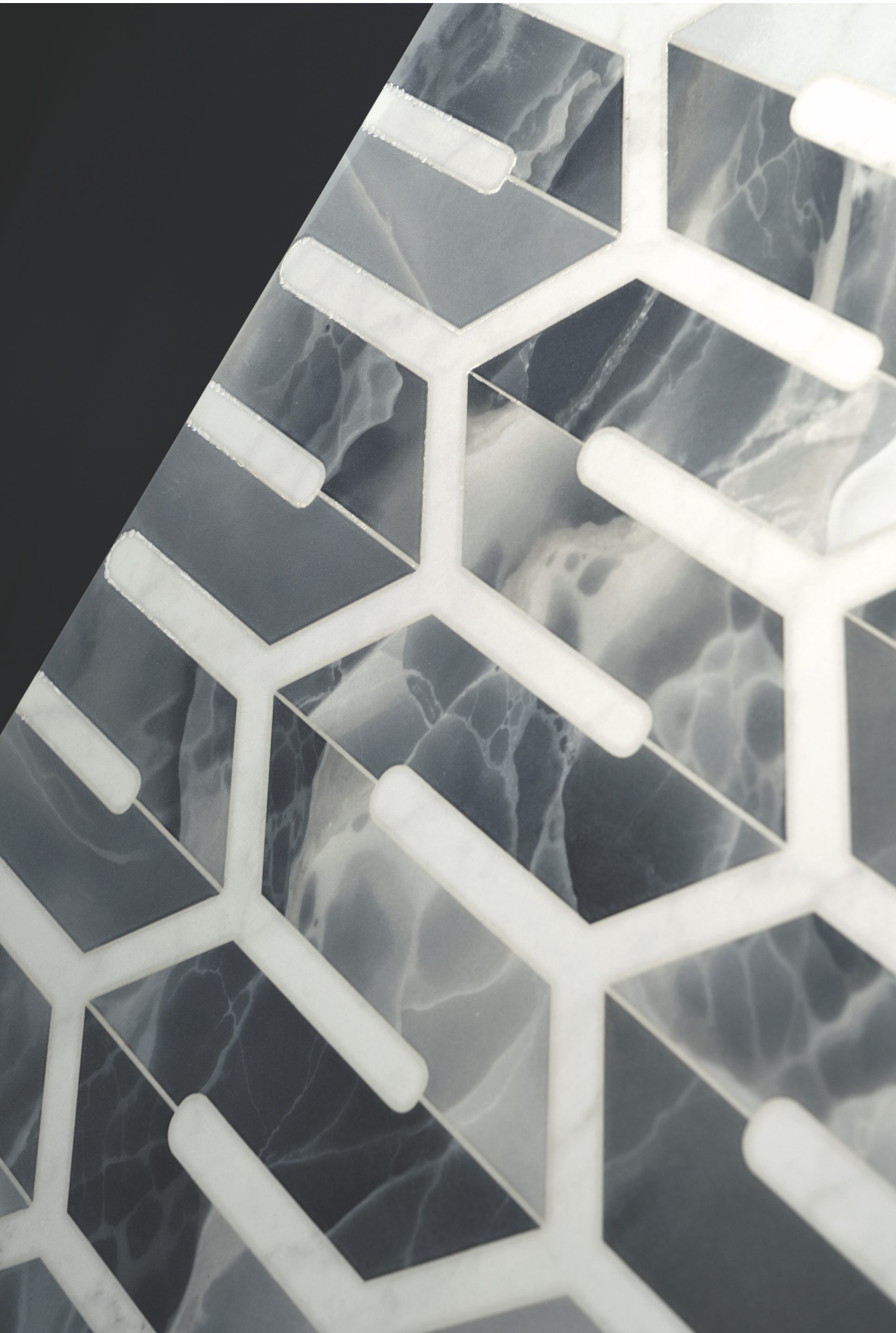
RANDOM :
4

Scan Here
For Virtual



REGAL GLOW ONYX BLACK & DECOR





REGAL GLOW ONYX BLACK DECOR
FINISH : SHINEX PLUS



REGAL GLOW ONYX BLACK
FINISH : SHINEX

SIZE :
800x1600mm

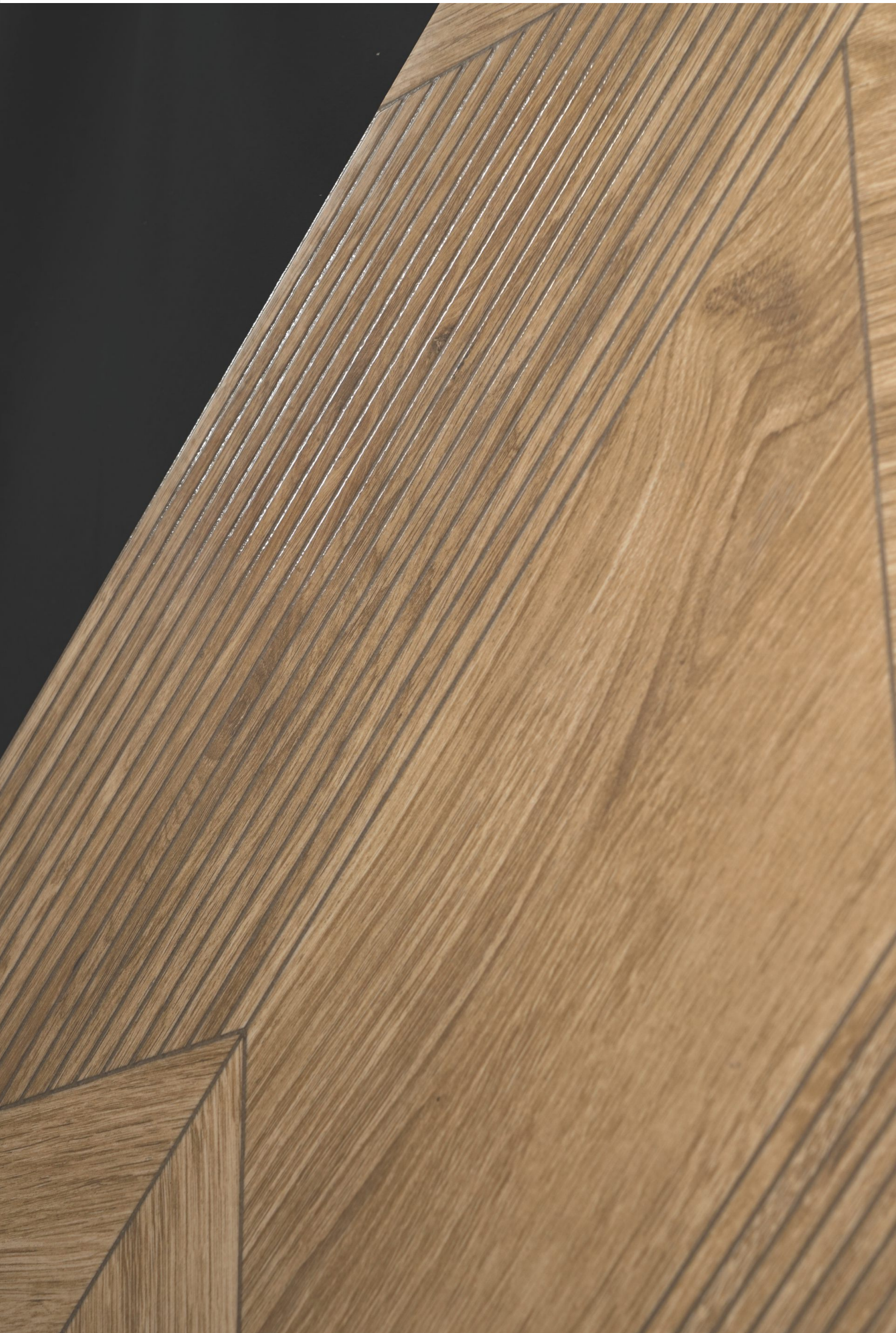
RANDOM :
4

Scan Here
For Virtual



REGAL HERITAGE WOOD OAK





REGAL HERITAGE WOOD OAK
FINISH : SHINEX PLUS

SIZE :
800x1600mm

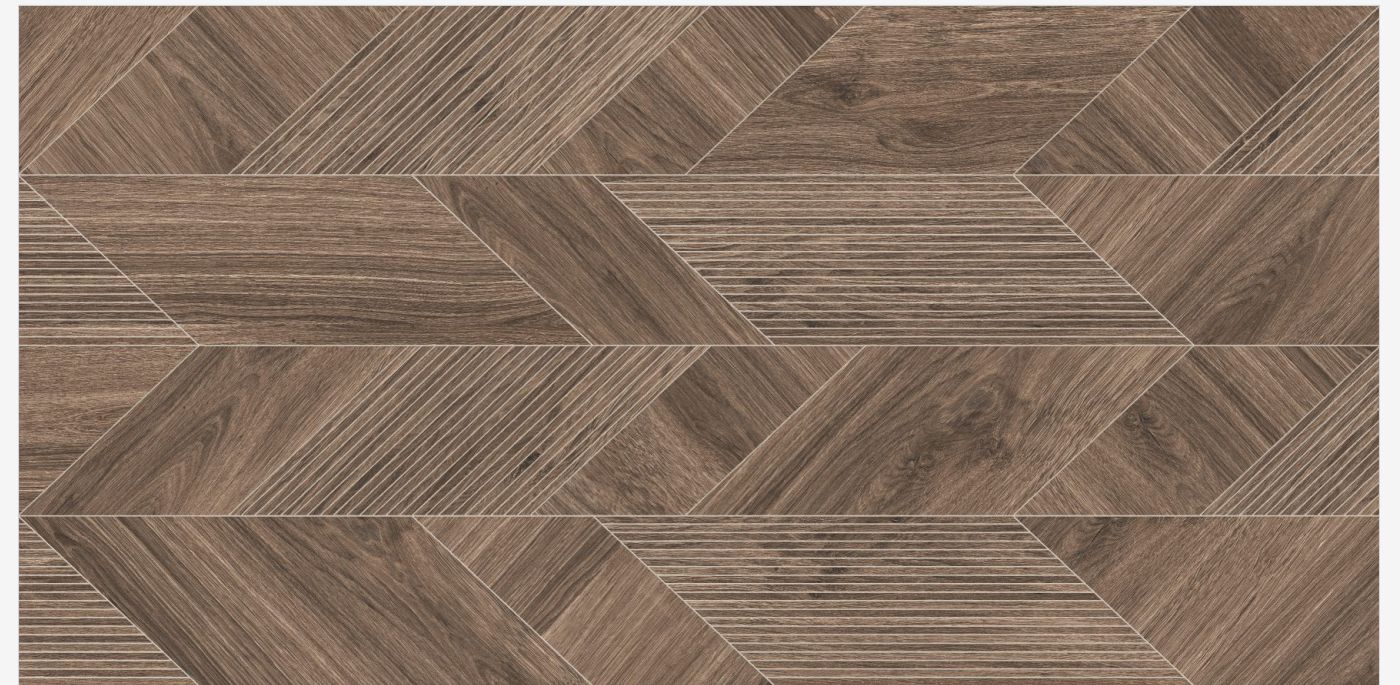
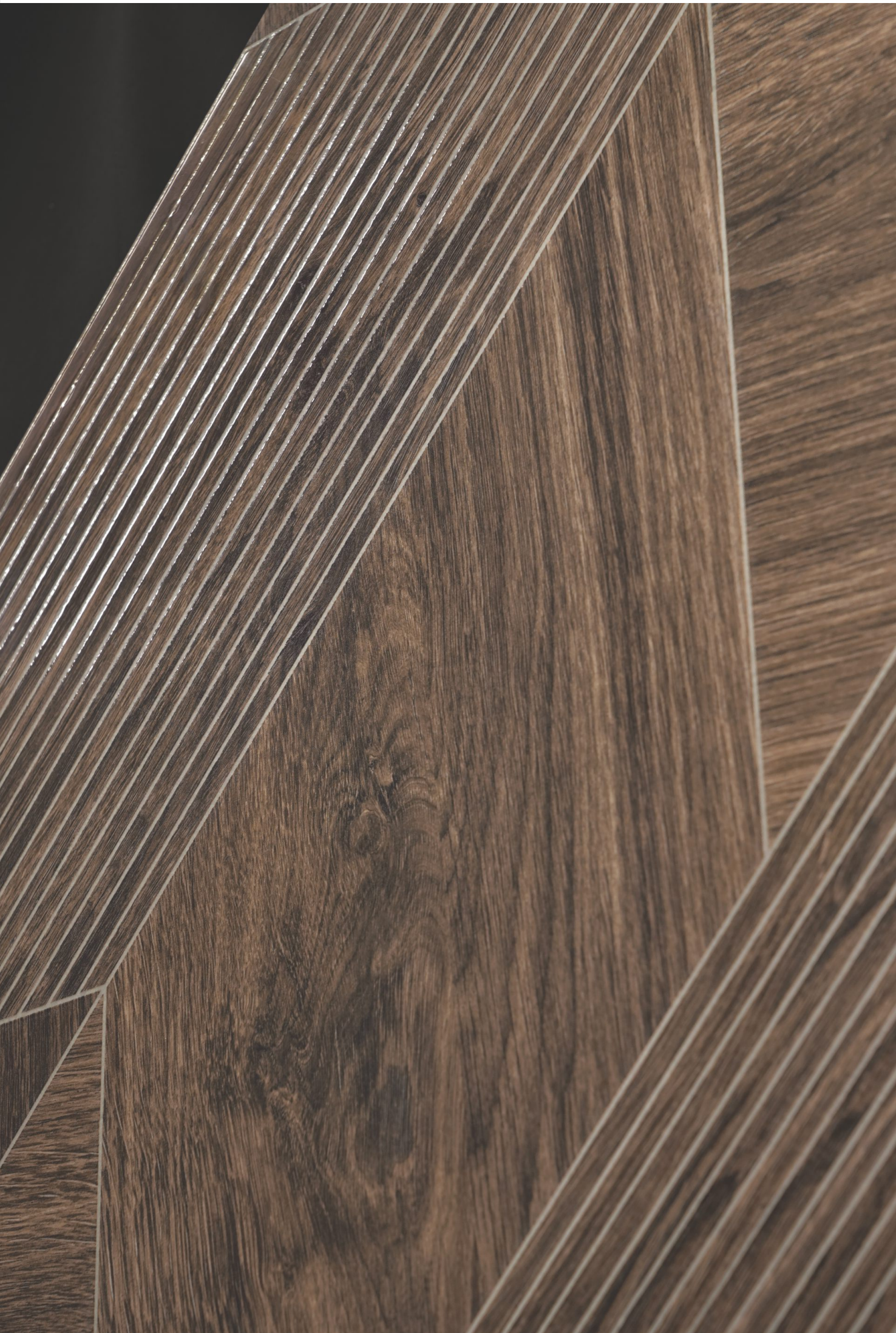
RANDOM :
4

Scan Here
For Virtual
360°



REGAL HERITAGE WOOD WALNUT





REGAL HERITAGE WOOD WALNUT
FINISH : SHINEX PLUS

SIZE :
800x1600mm

RANDOM :
4

Scan Here
For Virtual
360°



Instructions

Handling

For handling the slabs, as well as for cutting and laying, CREANZA recommends the use of a kit of devices designed especially for large sizes. To increase rigidity and limit twisting, use a system composed of parallel and transverse guides



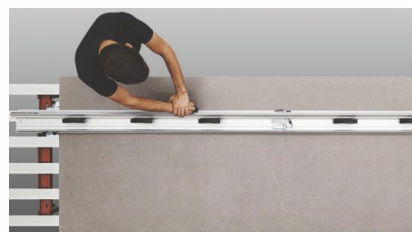
Parallel And Transverse Guides



Reinforced Trolley for slab tile

Cutting & Drilling

1. Side Cutting Process



1. Cutting Unit



2. Cutting of Tile



3. Refining Smooth Rough Edges With A Diamond Polishing Pad

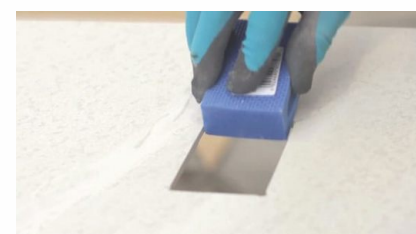
2. Centre Cutting Process



1. Non Percussion Drill



2. Cut with Diamond Blade Angle Grinder



3. Refining Smooth Rough Edges With A Diamond Polishing Pad

3. Centre Drilling Process



1. Round Cut with Diamond Blade Drill

Laying & Levelling



1. Cement laying on Floor



2. Cement laying on Tile



3. Spacers + Leveller



4. Levelling Wedges



5. After Levelling Process leave it for 8-10 hrs.



6. Remove Wedges ones it Dry

Floor Installation

1. First spread the cement mixer onto the floor substrate
2. At the same time, Apply the cement mixer onto the back of the slab with a tile trowel.
3. The recommended cement mixer is must be spread over in one direction only.
4. Using a trowel and following the same direction as previously applied to the back of the slab
5. Being careful to maintain a minimum joint of 3mm.
6. Tap the slab with a rubber trowel for a complete fixing, ensuring the air is expelled.
It is recommended to start from the centre of the slabs and then move towards the edges.
7. Complete the laying operations using a suitable sealant, while keeping at least a 3mm joint through the use of spacers
8. To make this task easier, use the special device for pulling over the slabs, available on the market
9. Levelling wedges at each linear metre of the slabs are recommended
10. After Levelling Process leave it for 8-10 hours Remove Wedges ones it Dry

Cleaning And Maintenance

Infinia+ products are non porous (due to their high quality raw materials, stringent production parameters and state of the art technology), hence any dust or deposited waste cannot penetrate the surface.

For most cases only a damp cloth is sufficient for cleaning.

Regular cleaning highlights the aesthetic features of the surface and gives it exceptional shine.

For highly aggressive cleaning caused by some common food and substances follow the table below.


TYPE OF STAIN	CHEMICAL PRODUCT	EXAMPLE
Grease	Alkaline - Solvent	Detergent
Oil	Solvent	Ammonia
Ink	Oxidant - Solvent	Alcohol
Rust	Acid	Hydraulic Acid
Lime	Acid	Descaling Products
Cement	Acid	Hydraulic Acid
Wine	Alkaline	Ammonia Or Bleach
Coffee	Alkaline - Solvent	Ammonia Or Bleach
Rubber	Solvent	Alcohol
Plaster	Acid	Hydraulic Acid
Candle Wax	Solvent	Alcohol
Blood	Oxidant	Bleach
Ice Cream	Alkaline	Detergent
Resin	Solvent	Alcohol
Fruit Juice	Oxidant	Bleach

Disclaimer: The aim of this manual is to offer helpful suggestions about handling and maintaining Lastra slabs. Due to nature of sintered ceramic material, it is highly advisable to consult an expert for these purposes. CREANZA cannot be held responsible for any damage resulting from using the information and suggestions contained in this technical manual.

Technical Specification of GVT

CHARACTERISTIC	International Standards Group B1a- ISO 13006 Annx. G.	MEAN VALUE OF CREANZA	TEST METHOD
Deviation In Length	± 0.60%	± 0.10%	ISO-10545-2
Deviation In Thickness	± 5.00%	± 4.00%	ISO-10545-2
Straightness Of Sides	± 0.50%	± 0.10%	ISO-10545-2
Rectangularity	± 0.60%	± 0.10%	ISO-10545-2
Surface Flatness	± 0.50%	± 0.15%	ISO-10545-2
Surface Quality (%)	A minimum of 95% of the tiles shall be free from visible defects that would impair the appearance of a major area of tile	95% Free from Visible Defects	
Scratch Hardness of Surface (Moh's scale)	-	Min. 6	ISO-10545-2
Modulus of Rupture	> 35N/mm3	> 38N/mm²	ISO-10545-4
Breaking Strength	> 1300 N	> 1500 N	ISO-10545-4
Water Absorption	< 0.50%	< 0.08%	ISO-10545-3
Stain Resistance	Stain Resistant	Stain Resistant	ISO-10545-14
Chemical Resistance	No Damage	No Damage	ISO-10545-13
Thermal Expansion	< 9 x 10-6	< 7 x 10-6	ISO-10545-8
Moisture Expansion	Nil	Nil	ISO-10545-10
Thermal Shock Resistance	No Damage	No Damage	ISO-10545-9
Resistance to Surface Abrasion	Manufacturer to State Abrasion Class	PEI class 3-5	ISO-10545-7
Bulk Density	> 2.00	> 2.20	ISO-10545-3

Packing Detail

Products	Size	Pcs. / Box	Area / Box	Wt./Box
	800x1600mm	2 pcs.	256 sq. mtr.	52 kg.

Note: Colour Shown are as accurate as the limitations of the printing process will allow. Prospective customers are advised to inspect a sample of the tile before ordering. Every effort has been made to ensure the accuracy of the information given. However, the company reserve the right to change the specifications without prior notice. Sometime variations in shade or size being inherent to ceramic industry may occur. Before fixing, we advise you to follow the fixing instructions on the cartons of the tiles as no responsibility can be accepted by the company once the tiles have been fixed.



COMMANDER VITRIFIED PVT. LTD.

8-A N.H., At. Sartanpar,
Ta. Wankaner - 363 621,
Dist. Morbi, Gujarat, INDIA

info@creanza.in | export@creanza.in
+91 95123 20066

DELHI DISPLAY CENTRE :

A-131, Ground Floor, Sector-63,
Noida - 201 301, Delhi, INDIA

Cell : +91 95123 90035
Tele.: +91 120 4273335

BANGALORE DISPLAY CENTRE :

2nd Floor, Chhabria Square,
126, KH Road, Bangalore - 560 027,
Karnataka, INDIA

Cell : +91 95123 90034

AHMEDABAD DISPLAY CENTER :

Near Oganaj Circle,
Sardar Patel Ring Road,
Above Wood Element Store,
Ahmedabad - 380 060, Gujarat, INDIA

Cell : +91 95123 20056

CREANZA.IN

For Sales Enquiry :

WEST ZONE

MH / GOA / CG	+91 95123 20065
GUJARAT	+91 95123 20056
MP	+91 95123 20030
RAJASTHAN	+91 95123 20034

SOUTH ZONE

KARNATAKA	+91 95123 90034
TN	+91 95123 90032
KERALA	+91 95123 20057
TELANGANA / AP	+91 95123 20042

NORTH ZONE

DELHI / HARYANA /	
PUNJAB / HP / J&K	+91 95123 90035
UP / UK	+91 95123 20035

NORTH EAST

+91 95123 20054

EAST ZONE

WB / ODISHA	+91 95123 20048
BIHAR	+91 95123 20016
JHARKHAND	+91 95123 20047

EXPORT

+91 99251 41768
+91 95123 20044
+91 95123 20077